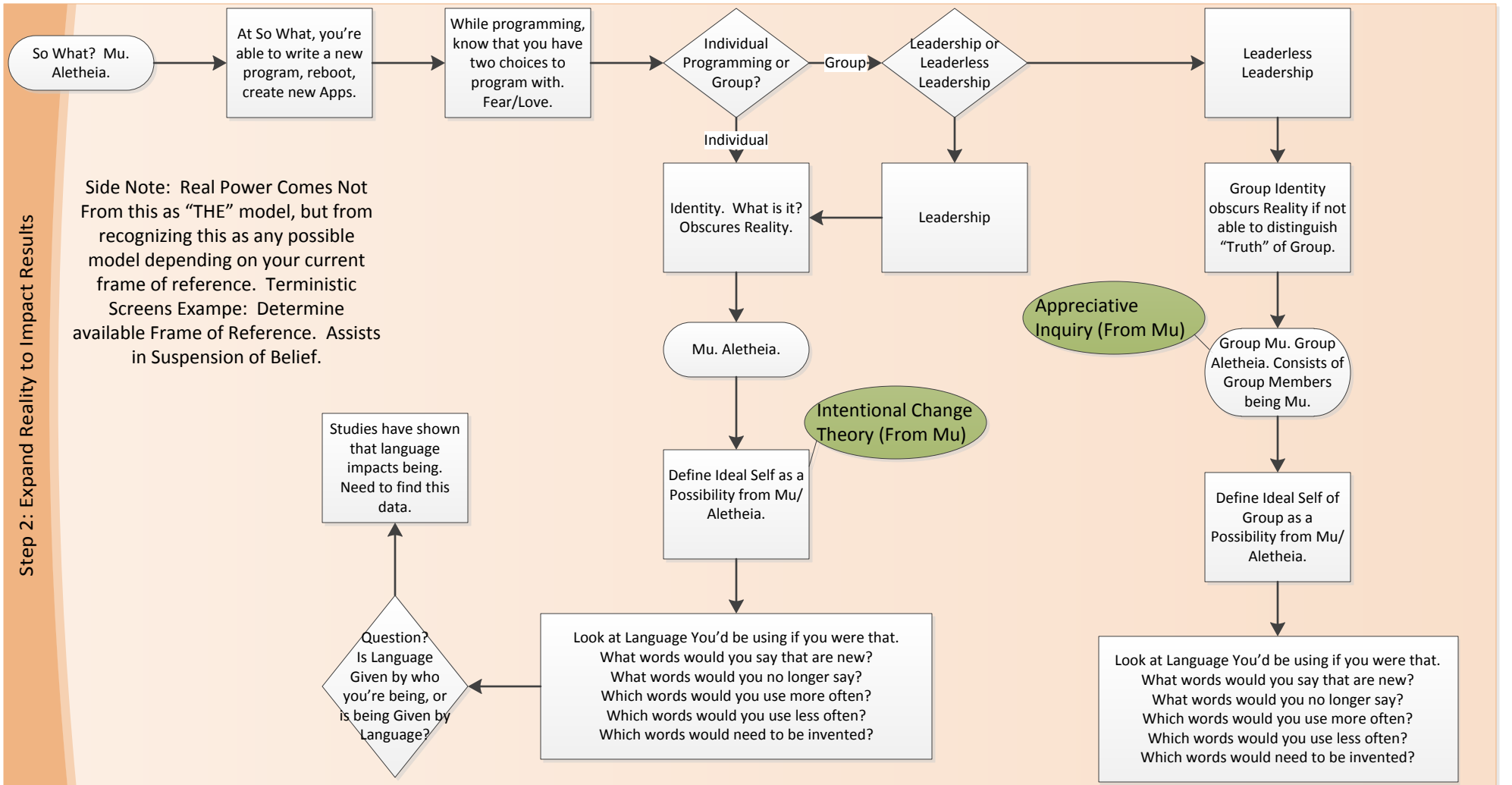


**Step 1: Break Open Current View of Reality**



**Step 2: Expand Reality to Impact Results**

Side Note: Real Power Comes Not From this as "THE" model, but from recognizing this as any possible model depending on your current frame of reference. Terministic Screens Exampe: Determine available Frame of Reference. Assists in Suspension of Belief.

Appreciative Inquiry (From Mu)

Intentional Change Theory (From Mu)

Question? Is Language Given by who you're being, or is being Given by Language?

Look at Language You'd be using if you were that. What words would you say that are new? What words would you no longer say? Which words would you use more often? Which words would you use less often? Which words would need to be invented?

Look at Language You'd be using if you were that. What words would you say that are new? What words would you no longer say? What words would you use more often? Which words would you use less often? Which words would need to be invented?